

scitech



Luminosity Circle

A collective dedicated to sparking the curiosity and innovation that will lead to a brighter future.





Nurturing the Next Generation

Chances are you've already seen firsthand the awe and wonder that Scitech evokes.

As Chief Scientist, my passion is to see Western Australia develop into a global hub of creativity and innovation. Scitech will play a vital role in this vision coming to life.

For over three decades, they have acted as a catalyst for curiosity and inspiration. But for Scitech to remain a vibrant and accessible resource for learners of all ages and backgrounds, it will take the generous support of individuals like you – individuals who understand that we can spark a lifelong love of learning through hands-on exploration and the thrill of discovery.

Thank you for taking action. Your philanthropy will ensure that our State's iconic science discovery centre can continue engaging all Western Australians in science, technology, engineering and maths. Together we can nurture the next generation of critical thinkers and innovators who will shape the world with their ingenuity and passion.

Best wishes,

Professor Peter Klinken, AC FAHMS FTSE CitWA
Chief Scientist of Western Australia

Science Offers Hope

In the 1980s, three influential Western Australian figures- physicist Emeritus Professor John de Laeter, mining leader Sir Laurence Brodie-Hall, and politician and computing pioneer the Hon. Mal Bryce – asked the question “If our future depends on science and technology, how can we get people inspired?”. The answer was Scitech.

We opened our doors in 1988 with a mission to inspire the state’s collective curiosity. This continues to be our purpose and is arguably more relevant now than ever before. Our purpose extends past the walls of our discovery centre, and even beyond the delivery of our outreach programs.

In a world facing pressing challenges, science offers hope and solutions. Which is why it is imperative that we inspire the next generation to engage in science, technology, engineering, and mathematics. At Scitech, we achieve this through immersive experiences that showcase the real-world applications of science and how they have shaped the world around us. We celebrate the solutions made possible by curious innovators.

And while we’ve connected millions of Western Australians to science, there is still so much work to be done. Your generosity will help us get there.

By joining the Luminosity Circle, you are not simply contributing funds; you are investing in a future where curiosity, imagination and critical thinking are qualities to be valued and nurtured.

Thank you for bringing joy and curiosity to WA.



John Chappell
CEO



Annual Giving

Scitech's Luminosity Circle is a collective of passionate individuals who have come together to inspire the next generation of innovators and problem-solvers.

Becoming a Scitech Luminary is one of the most significant ways you can support our work. Giving at this level connects you to a community of like-minded philanthropists. People, like you, who want to ensure that all Western Australians have access to world-class science experiences that will equip them with the skills needed to take on the challenges of tomorrow.

With your help, we can dream big and plan better.

You are invited to direct your annual donation to one of four impact areas outlined in this prospectus. Donors are able to join the Luminosity Circle at one of the following giving levels:



NEBULA
\$1,000+

As a Nebula donor you will receive updates on the impact of your gift, invitations to exhibition launches and exclusive Luminosity events, and have your generosity acknowledged on our website and impact report.



STAR
\$2,500+

As a Star donor you will also receive free general admission passes and enjoy a guided behind-the-scenes tour of our exhibition workshop.



GALAXY
\$5,000+

As a Galaxy donor you will also receive invitations to Scitech events such as our exclusive after-hour events and special planetarium screenings.



QUASAR
\$10,000+

As a Quasar donor you will also be acknowledged on the Digital Partners Board at the entry to Scitech Discovery Centre and be featured on Scitech socials (if desired).



BLAZAR
\$25,000+

As a Blazar donor you will also have the opportunity to attend program delivery (travel costs not included), and are invited to connect with Scitech's Senior Leadership and Chairperson to discuss Scitech's future ambitions.

All donations over \$2 are tax deductible.



Exhibitions

Scitech is a world-leader in exhibition design. Owing to our isolation, Scitech is also one of the few science museums globally that conceptualise and create exhibits in-house.

Your support will enable us to develop high-quality educational experiences that ignite curiosity and inspire imaginations. Through hands-on exhibitions and shows, we teach young West Australians foundational science concepts and create experiences that can spark a lifelong love of learning.

Nearly 300,000 people experience the joy of interacting with Scitech exhibits in Western Australia each year. But your impact will go even further, influencing children all across the world, with our feature exhibitions regularly touring across North America, Europe and Asia.

“

I remember the feelings of excitement, inspiration, fascination and joy. Scitech taught me that, despite the sometimes dry lessons in school, science is actually FUN and fascinating. I doubt I would have pursued a Physics degree if this fact hadn't been instilled in me from a young age.

- Dr Jacinta Delhaize, Astronomer and Astrophysicist

First Nations

For 65,000 years, First Nations people have practiced science, passing down their learnings from generation to generation. At Scitech, we aim to celebrate this knowledge by developing relationships with ranger groups and traditional knowledge holders to provide a platform for sharing traditional science knowledge with a broad audience.

Your gift will ensure the continuation of our Aboriginal Education Program (AEP) which sees Scitech visiting some of the most remote communities across Western Australia, and indeed the world.

AEP is an important part of Scitech's commitment to providing science experiences to those who might not otherwise get the opportunity. With a focus on developing science enquiry skills, the hands-on workshops use culturally appropriate teaching tools. These tools allow science communicators to first connect with students, and then to increase their awareness of the importance and relevance of science in their lives.

We are also committed to building the capacity of teaching staff in remote communities. Free professional development workshops are held for teachers and Aboriginal and Islander Education Officers to increase their confidence in teaching through hands-on engineering activities.

Your investment will not only support the continuation of AEP, but will enable Scitech to work with traditional knowledge holders and scholars so that our resources and exhibits are culturally accurate and appropriate.

“

I love the fact that, even in the most remote setting in WA, Scitech makes the effort for our kids who are sadly lacking in many incursions.





Access

We believe that everyone should have the same opportunity to explore and learn. By directing your donation to our Access pillar, you will actively break down barriers and increase inclusivity in science, technology, engineering and mathematics.

Funds will support children from disadvantaged families to attend our Discovery Centre, where they can create cherished memories and be inspired, just like their peers.

Donations will also allow Scitech to implement its Access & Inclusion Plan. This will empower Western Australians of all abilities and backgrounds to improve their knowledge and attitudes toward science. Over the next three years, we are aiming to provide more inclusive spaces and experiences for neurodiverse children, wheelchair users, and people with hearing or vision impairment.

“

Before the trip, our students were excited and nervous – they had never been on an interactive excursion where everything was able to be touched before. We [got] to see real world applications of science that reached far beyond what a classroom or school could provide.

- Jessica Jenkin, East Maddington Primary School



Regions

We're on a mission to engage as many Western Australians in science and technology as we can. Help bring the excitement of Scitech to all corners of Western Australia with your annual gift.

Our team travels over 70,000 kms each year to deliver interactive shows and hands-on workshops to excited communities eager for a different science experience. Your investment will help enhance and expand our existing Statewide Primary and Early Childhood tours, and digital programs.

We currently visit every regional primary school every three years. Our aim is to increase our impact through virtual workshops, teacher resources and more frequent tours.

“

I have now very eager students that are motivated and engaged to interact with Science. My son walked the beach with me this morning reciting every experiment and why things work the way they do... I think you all brought some real magic to our students' lives and learning.

- Gareth Palmer, Esperance Primary School

Become a Scitech Luminary Today

Your Details

First Name/s:
Surname:
Address:
Email:
Phone:

I would like to make an annual gift of:

<input type="checkbox"/>	\$1,000 (\$84 per month)
<input type="checkbox"/>	\$2,500 (\$209 per month)
<input type="checkbox"/>	\$5,000 (\$417 per month)
<input type="checkbox"/>	\$10,000 (\$834 per month)
<input type="checkbox"/>	\$25,000 (\$2,084 per month)
<input type="checkbox"/>	Other: \$ <input type="text"/>

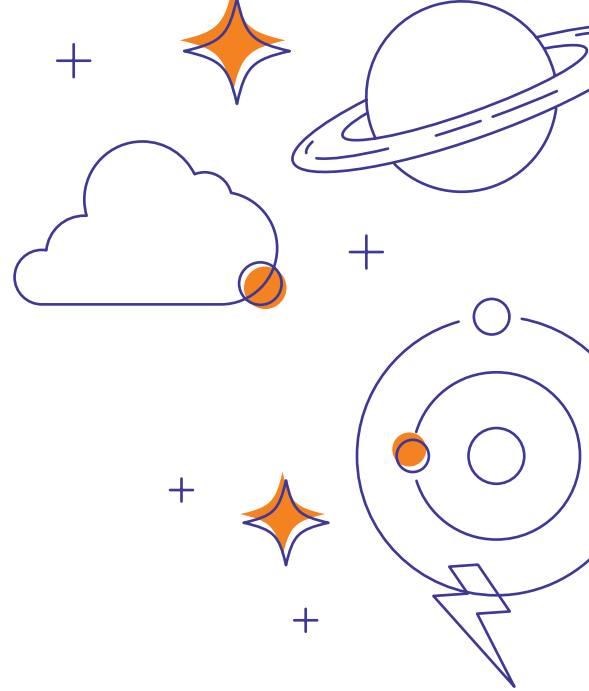
I would like to direct my donation to:

<input type="checkbox"/>	Exhibitions
<input type="checkbox"/>	First Nations
<input type="checkbox"/>	Access
<input type="checkbox"/>	Regions
<input type="checkbox"/>	Wherever the need is greatest

Acknowledgement

I/We wish for this contribution to be acknowledged as:
--

<input type="checkbox"/>	I/We prefer to remain anonymous
--------------------------	---------------------------------



Payment

I will make a direct deposit (preferred payment method)

Bank:	Westpac
Account Name:	Scitech Discovery Centre
BSB:	036-051
Account Number:	558447
Reference:	Donation + [Your Full Name]

I will pay by cheque
Please make cheques payable to Scitech Discovery Centre.

I will pay online via credit card (monthly instalment option available)
Please process your payment here. give.scitech.org.au/event/luminosity-circle

Legacy

I would like to receive information about
making a bequest to Scitech Discovery Centre.

I have made arrangements to include
Scitech Discovery Centre in my Will.

Please send your completed form to:

Giving@scitech.org.au

OR

Scitech Discovery Centre
Attn: Manager, Philanthropy
PO BOX 1155
WEST PERTH WA 6872

Please allow up to 15 business days for your receipt to be issued.





Time is valuable.

Thank you for using yours to explore giving opportunities with Scitech. If you would like more information about our work, or wish to discuss joining Scitech's Luminosity Circle in more detail, we would love to hear from you.



08 9215 0846



giving@scitech.org.au



www.scitech.org.au

scitech

